



KEVIN.MURPHY

COLOUR SALON LEAVE BEHIND



CONTENTS

04	KEVIN: THE SESSION STYLIST
06	A WORLD OF COLOUR
09	SKINCARE FOR YOUR HAIR
10	FASHION PERFORMANCE ENVIRONMENT
13	THE CHOICES WE MAKE
14	COLOUR PORTFOLIO
16	KEVIN.MURPHY+CODE
24	KEVIN.MURPHY+BLONDE
33	COLOR.ME BY KEVIN.MURPHY
40	KEVIN.MURPHY+GLOSS
49	KEVIN.MURPHY ACTIVATORS
50	COLOUR TOOLS
52	SUPPORT
54	STAIRWAY TO KEVIN
57	CONNECT WITH THE COMMUNITY

KEVIN: THE SESSION STYLIST

Industry icon Kevin Murphy understands the transformative power of hair better than anyone in his profession. As a master of runway, editorial and film, Kevin's work has graced the covers of all major global print publications, and he has directed hair teams for countless high-profile fashion houses.

Today, Kevin remains at the forefront of an industry that he is deeply committed to and passionate about. Known for his innovative approach, Kevin's expertise spans beyond styling to include ground-breaking colour techniques and the development of cutting-edge products that support both the environment and the health of hair. From creating beautiful, wearable designs to delivering exceptional colour looks, Kevin Murphy is recognised by his peers as a visionary in shaping the modern hairdressing industry.

Being a truly global brand, we are sold in over 60 countries, KEVIN.MURPHY has become known for its high quality, high performance, skincare inspired products that work for colourists and their clients-on set or in salon.





A WORLD OF COLOUR

“The need for hair colour that truly meets the demands of both the salon and consumers led me to look for innovation beyond traditional hair colour technologies. I sought to harness the advancements in skincare technology, creating unique ranges with high-performing ingredients and technologies that deliver superior results.”

Kevin





SKINCARE FOR YOUR HAIR

MORE THAN COLOUR

KEVIN.MURPHY combines the best of science and nature, elevating the salon experience. Our colour formulations incorporate high-performing skincare ingredients and technologies that not only deliver consistently but also provide exceptional results. Born from fashion and driven by performance, our colour portfolio offers limitless possibilities, empowering stylists with the confidence to meet every client's needs. With multifaceted products that work in synergy, KEVIN.MURPHY Colour provides complete, efficient solutions designed to take your salon business to the next level.

FASHION PERFORMANCE ENVIRONMENT

OUR PILLARS

Born from fashion and driven by performance, the KEVIN.MURPHY colour portfolio offers versatile solutions with diverse colour ranges that provide stylists with multiple options for self-expression, bringing the latest in fashion to the salon floor.

An artful blend of science combined with naturally derived ingredients, we carefully consider the impact of each ingredient we add and are defined by those we don't.



KEVIN.MURPHY
+GLOSS

GLOSS

Acidic hair colour treatment with
KM.BOND² and Vitamin C
Traitement coloration acide avec
KM.BOND² et Vitamine C

10.13 / 10AG

60 mL / 2.0 Fl. Oz. Liq. e

THE CHOICES WE MAKE

It is our commitment to affecting positive change on people and planet. At KEVIN.MURPHY, we care about the environment and are striving to improve our impact. Creating products with a conscience that are both kind to our hair and the environment has been our guiding principle from the very beginning. Giving back is at the heart of our brand, and we are dedicated to supporting charitable and environmental causes through the support of our distributors, salon network and customers.

COLOUR PORTFOLIO

WE CREATE PRODUCTS THAT ARE DESIGNED TO FULFILL THE NEEDS AND DESIRES OF STYLISTS, COLOURISTS AND THEIR CLIENTS.



KEVIN.MURPHY +CODE

Smart permanent hair colour powered by skincare technology for high-performing, modern results.

**SHADE
SPECIAL**



KEVIN.MURPHY+ BLONDEHIGH.LIFT

Gentle yet high-performance high lift SHADES to create flawless, shiny and healthy-looking blondes.

HIGH.LIFT



COLOR.ME by KEVIN.MURPHY

Ammonia-free, honey-based permanent colour that delivers multi-tonal results and consistent colour function.

**SHADE
TONER
BOOSTER
HIGH.LIFT
LIGHTENER**



KEVIN.MURPHY +GLOSS

Acidic liquid demi-permanent colour designed as a colour and treatment in one.

**SHADE
CLEAR
GEL.ACTIVATOR**



KEVIN.MURPHY ACTIVATORS

A range of premium, versatile activators integrated with the KEVIN.MURPHY colour line, elevating your in-salon experience.

**CREAM.ACTIVATOR
LIQUID.ACTIVATOR**

KEVIN.MURPHY + CODE

THE NEW CODE OF COLOUR



KEVIN.MURPHY
+CODE



KEVIN.MURPHY+CODE

THE NEW CODE OF COLOUR

CODE is our smart permanent hair colour powered by skincare, marking a new era of high-performing, modern colour. An efficient colour line that brings the latest from fashion and the editorial world to its colour palette, ensuring a sophisticated, rich colour that is lit from within to suit your client's needs.

THE BENEFITS

Optimised and reliable colour results with:

- Up to 100% grey coverage¹
- Up to 4-5 levels of lift²
- 150% more even results³
- 100% colour intensity¹
- Long-lasting results, increased colour durability³
- More shine⁴ and repair⁵

THE CHOICES WE MAKE

Curated ingredients chosen with the planet in mind:

- Vegan Formula
- Organic Argan Oil certified by Ecocert

Eco-conscious designs:

- Tube made from 100% recycled aluminium
- Cap crafted from 100% recycled plastic
- Box constructed from 80% recycled cardboard
- Paper conservation: no internal leaflets included
- Recyclable packaging⁶

¹Salon Test.

²Up to 4 levels of lift when using KEVIN.MURPHY+CODE and 5 levels when using KEVIN.MURPHY+BLONDE HIGH.LIFT.

³Instrumental test.

⁴26% increase in shine. Instrumental test.

⁵22% increase in repair. Instrumental test.

⁶This may vary on the recycling facilities of each country.

WHERE COLOUR MEETS SKINCARE



SCAN FOR
KM.LAMELLAR
TECHNOLOGY
VIDEO

KM.LAMELLAR TECHNOLOGY

FOR HIGH-PERFORMING COLOUR AND CARE RESULTS.

WHAT IT IS

KM.LAMELLAR technology is a groundbreaking technology inspired by advanced skincare delivery systems.

The word “lamellas” means layers. Inside the formula, fine and alternating layers (lamellas) are found around oil droplets, forming an innovative emulsion arrangement where dyes, repairing actives and a powerful anti-metal agent are present.

This exclusive emulsion is designed to improve the delivery of dye and the care properties of colour formulations, ensuring more precise, consistent and effective results, regardless of the client’s hair needs.

THE RESULTS

Smart superior dye and care delivery:

- Improved colour evenness
- Elevated vibrancy
- Increased colour durability
- Enhanced shine and repair

KEVIN.MURPHY
+CODE

100 mL / 3.4 Fl. Oz. Lb. e

Smart permanent colour with KMLAMELLAR TECHNOLOGY
Coloration permanente intelligente avec KMLAMELLAR TECHNOLOGY



THE RANGE

91 SHADES

These high-performing SHADES provide modern, rich, illuminated results with up to 100% grey coverage.

NATURAL
WARM
COOL
SPECIAL





SPECIAL / SPECIAL

**KEVIN.MURPHY
+CODE**

Smart permanent colour with KMLAMELLAR TECHNOLOGY
Coloration permanente intelligente avec KMLAMELLAR TECHNOLOGY

100 mL / 3.4 Fl. Oz. Lq. e



WARM / CHAUD

**KEVIN.MURPHY
+CODE**

Smart permanent colour with KMLAMELLAR TECHNOLOGY
Coloration permanente intelligente avec KMLAMELLAR TECHNOLOGY

100 mL / 3.4 Fl. Oz. Lq. e



**KEVIN.MURPHY
+CODE**

Smart permanent colour with KMLAMELLAR TECHNOLOGY
Coloration permanente intelligente avec KMLAMELLAR TECHNOLOGY

100 mL / 3.4 Fl. Oz. Lq. e



**KEVIN.MURPHY
+CODE**

Smart permanent colour with KMLAMELLAR TECHNOLOGY
Coloration permanente intelligente avec KMLAMELLAR TECHNOLOGY

100 mL / 3.4 Fl. Oz. Lq. e

NATURAL / NATUREL

KEVIN.MURPHY
+CODE



KEVIN.MURPHY+ BLONDE

LEVEL UP YOUR LIFT



KEVIN.MURPHY+
BLONDE



KEVIN.MURPHY+
BLONDEHIGH.LIFT

Permanent high lift colour with argan oil
Coloration ultra éclaircissante permanente avec huile d'argan

KEVIN.MURPHY+BLONDE

LEVEL UP YOUR LIFT

BLONDE HIGH.LIFT features 6 highlift shades designed to achieve ultra-light blonde results with warm, cool and neutral options.

THE BENEFITS

- Optimum lift, neutralisation and hair protection
- 6 high lift shades with up to 5 levels of lightening plus refining and toning in one easy application

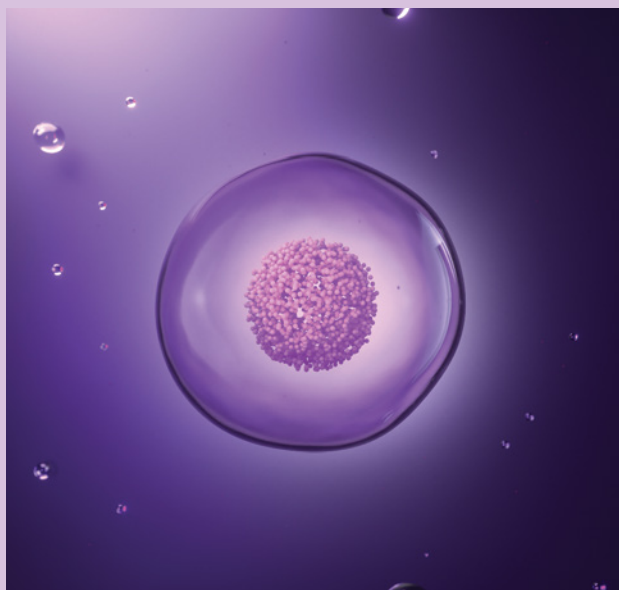
THE CHOICES WE MAKE

- 100% Vegan ingredients
- Organic Argan Oil certified with Ecocert
- Certified supplier Maroccavie works to protect the Argan Forest and support the rural population
- 100% recyclable outer packaging

BREAKTHROUGH TECHNOLOGY

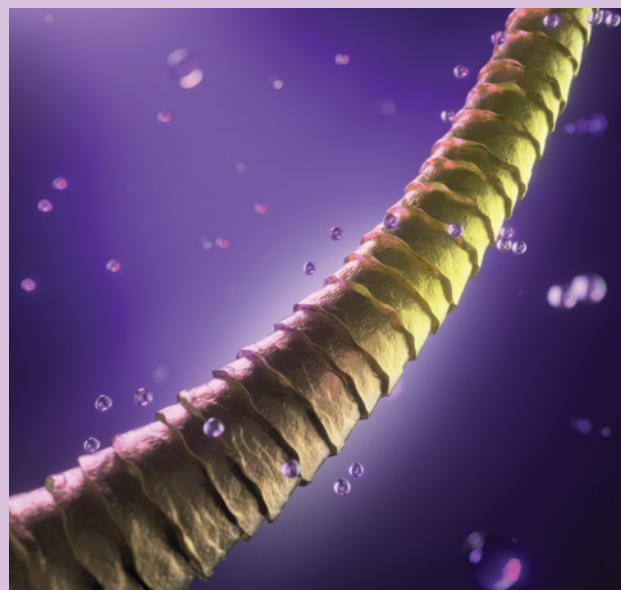
KM.ARGAN-SPHERE

FOR SHINY, HEALTHY-LOOKING BLONDES WITH EVEN AND NEUTRALISED RESULTS.



STEP 1 KM.ARGAN-SPHERE STABILISATION

Argan Oil and pigments are stabilised into the KM.ARGAN SPHERE and form spherical droplets which are then scattered evenly through the formula, resulting in a smooth consistency.

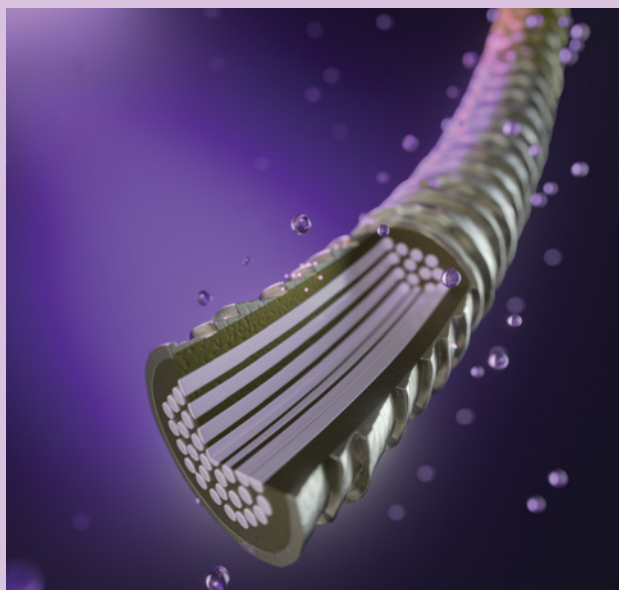


STEP 2 OPTIMUM HAIR LIGHTENING

During application, the alkaline agent lifts hair's natural pigment up to 5 levels.

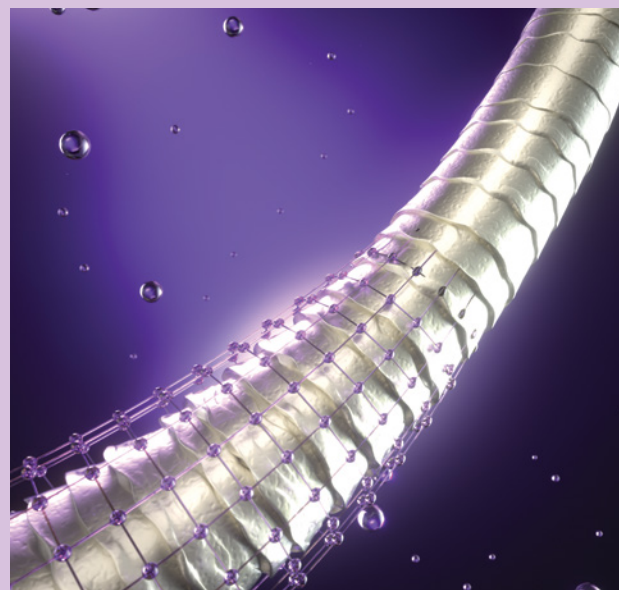


SCAN FOR
KM.ARGAN-SPHERE
TECHNOLOGY
VIDEO



STEP 3 **FLAWLESS NEUTRALISATION**

KM.ARGAN-SPHERE is activated, delivering the necessary pigment combination into the hair cortex and across the hair matrix. Meanwhile, reflect pigments counteract and neutralise underlying pigment, creating uniform and beautiful blondes.



STEP 4 **ULTIMATE PROTECTION**

Argan Oil helps to nourish and smooth the hair fibre for shiny and healthy-looking blonde results.

THE RANGE

6 HIGH.LIFTS

A range of beautiful high lift shades to take clients to the blonde side, featuring a full spectrum of seamless blonde results from warm to cool to neutral.





KEVIN.MURPHY+
BLONDEHIGH.LIFT

Permanent high lift colour with argan oil
Coloration ultra éclaircissante permanente avec huile d'argan



KEVIN.MURPHY+
BLONDEHIGH.LIFT

Permanent high lift colour with argan oil
Coloration ultra éclaircissante permanente avec huile d'argan



KEVIN.MURPHY+
BLONDEHIGH.LIFT

Permanent high lift colour with argan oil
Coloration ultra éclaircissante permanente avec huile d'argan



KEVIN.MURPHY+
BLONDEHIGH.LIFT

Permanent high lift colour with argan oil
Coloration ultra éclaircissante permanente avec huile d'argan





COLOR.ME

by KEVIN.MURPHY

WHERE INNOVATION
MEETS INDIVIDUALITY

COLOR.ME
by KEVIN.MURPHY

COLOR.ME
by **KEVIN.MURPHY**

Honey based colour with molecular couple guarantee
Coloration à base de miel qui garantit une association
unique des molécules

100 mL e 3.3 Fl. Oz. Liq



COLOR.ME BY KEVIN.MURPHY

WHERE INNOVATION MEETS INDIVIDUALITY

COLOR.ME by KEVIN.MURPHY is our ammonia-free demi-to-permanent colour that delivers multi-tonal results and consistent colour function. A highly versatile colour line to take your colour to the next level allowing for creativity and next level customisation of colour.

THE BENEFITS

- **HIGH PERFORMANCE:** COLOR.ME shades impart beautiful multi-tonal effects, provides brilliant grey coverage and delivers up to 4 levels of lift.
- **OPTIMUM COLOUR FUNCTIONALITY:** Endless possibilities. Endless creativity. COLOR.ME is so versatile that it can be used as a demi or permanent colour.

THE CHOICES WE MAKE

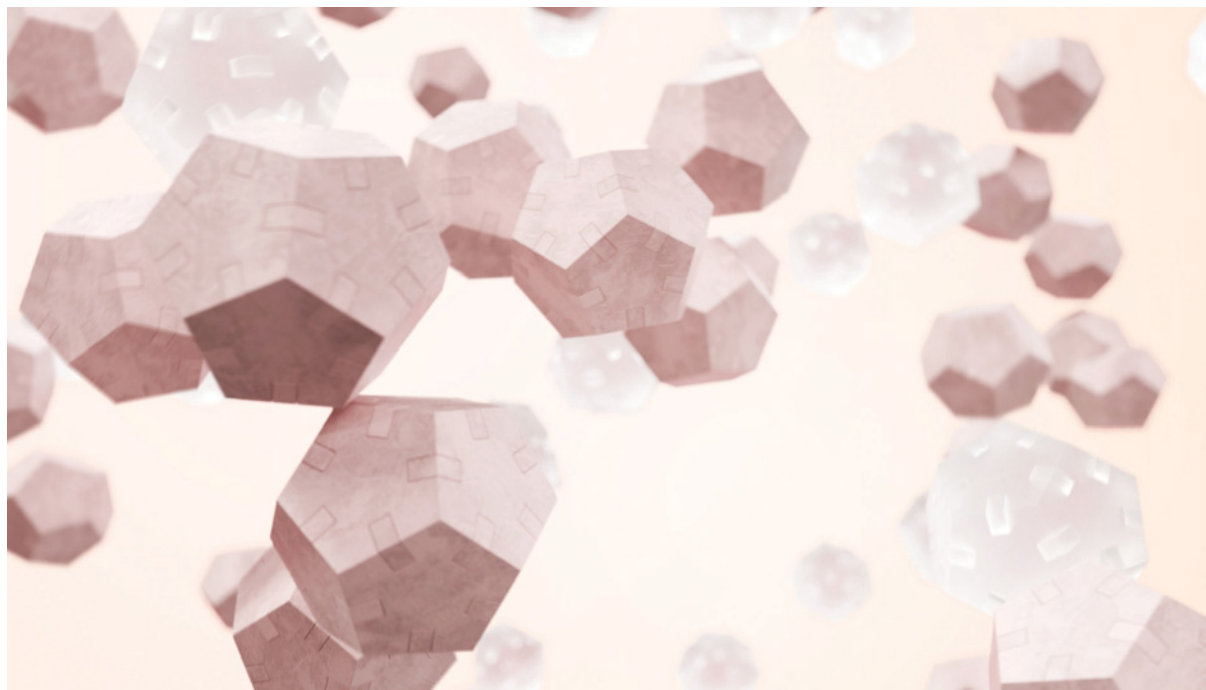
- Ammonia and PPD free¹
- Formulated with naturally derived ingredients
- 100% recyclable outer packaging

¹ Many scalp irritations and allergic reactions during the coloring process are related to ParaPhenylendiamine (PPD). Our SHADES are formulated without PPD, therefore minimizing the risk of irritations and allergic reactions caused by PPD. However they contain PPD-related ingredients.

OPTIMUM COLOUR FUNCTIONALITY

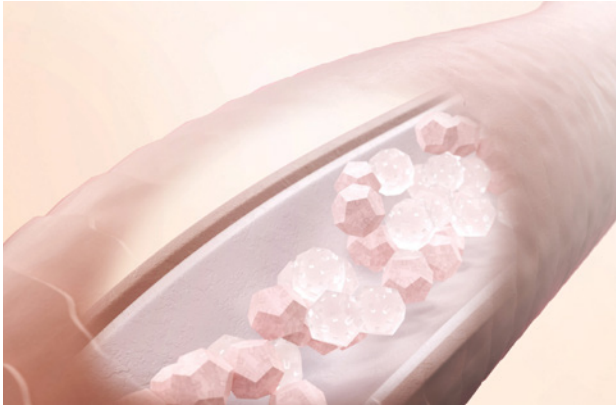
3 STEP TECHNOLOGY

FOR LONG-LASTING, MULTI-TONAL, LUMINOUS COLOUR RESULTS.



OXIDATION DELAY FUNCTION

When the KEVIN.MURPHY ACTIVATOR is added to the COLOR.ME shade, the oxidation process is delayed allowing for an all-over precise application, resulting in beautiful and even colour coverage.



SPECIAL MICRO PIGMENTS

Extremely small colour pigments are deposited onto the hair, which penetrate deep into the hair shaft, resulting in shinier and healthier looking hair.

MOLECULAR COUPLE GUARANTEE

An exact counting method is used and guarantees that not a single colouring molecule remains free. Only a secure bond or "safe" molecule is formed. This supports fewer skin irritations and allergic reactions.

THE RANGE

86 HONEY-BASED SHADES

These high-performance, multi-tonal shades provide endless creativity, brilliant grey coverage and natural looking results.

NATURAL
WARM
COOL

1 CLEAR

A neutral colour, intermixable with all COLOR.ME SHADES for colour balancing on lengths and ends.

5 BOOSTERS

BOOSTER can be added to all COLOR.ME SHADES to enhance colour, counteract the underlying pigment or to simply be creative with your formulation.

3 HIGH.LIFTS

These unique ammonia-free HIGH.LIFT SHADES achieve 3 – 4 levels of lift.

10 TONERS

TONER can be used to enhance, refine or soften hair colour.



LIGHTENERS

POWDER.LIGHTENER

These easy-to-use formulas provide amazing clear blonde results and are ideally suited for lightening and highlighting techniques.

POWDER.LIGHTENER

Up to 7 levels of lift.

POWDER.LIGHTENER

AMMONIA-FREE

Up to 6 levels of lift.

ULTIMATE.LIGHTENER

9 levels of lift with bond protection. A high performance lightener offering up to 9 levels of lift and bond protection. Formulated with naturally derived ingredients like Sugar Derivatives, Hydrolysed Rice Protein and Black Cumin Seed Oil, this unique formulation protects while lifting to preserve the integrity of the hair while creating crisp, clean blonde results.



FREESTYLE.LIGHTENER

Experience creative freedom with this clay-based lightener. Ideal for freehand applications that allows you to be an artist. Paint, lift, highlight and create natural, sun-kissed results with this gentle, no-drip formula. Up to 7 levels of lift.

CREAM.LIGHTENER

Add up to 7 levels of lift.

KEVIN.MURPHY
+ *GLOSS*

*COLOUR WITH STRENGTH
AND SHINE*



KEVIN.MURPHY
+GLOSS



KEVIN.MURPHY
+GLOSS

GLOSS

Acidic hair colour treatment with
KM.BOND² and Vitamin C
Traitement coloration acide avec
KM.BOND² et Vitamine C

8.44 / 8CC

60 mL / 2.0 Fl. Oz. Liq. e

KEVIN.MURPHY +GLOSS

COLOUR WITH STRENGTH AND SHINE

GLOSS is the acidic liquid colour designed as a colour and treatment in one. A luminous, demi-permanent colour, powered by KM.BOND² technology and Vitamin C, that goes beyond shine to reconstruct and deeply moisturise the hair for incredible strength.

THE BENEFITS

- No shift, no lift, no commitment
- 100% restoration of hair health¹
- 36% stronger & 37% thicker hair²
- 1.9x shine³
- Luminous, even colour results
- Colour without the new growth effect
- Acidic formula for no cuticle damage and no shift of natural melanin
- Perfect for refining, toning, neutralising and refreshing colour with bond treatment and shine

THE CHOICES WE MAKE

- Ammonia, PPD⁴, and MEA free
- 100% Vegan ingredients
- Biodegradable formula^{5w}
- Recycled plastic bottles
- Innovative energy savings in manufacturing process
- Mixed and bottled with 100% renewable energy

¹ On pre-lightened hair. Instrumental test. Restores 100% of the hair's original strength.

² On pre-lightened hair. Instrumental test.

³ On natural hair. Instrumental test.

⁴ Many scalp irritations and allergic reactions during the coloring process are related to ParaPhenylenDiamine (PPD). Our SHADES are formulated without PPD, therefore minimizing the risk of irritations and allergic reactions caused by PPD. However they contain PPD-related ingredients.

⁵ According to OECD 301 F guidelines

BOND STRENGTHENING TECHNOLOGY



SCAN FOR
KM.BOND²
TECHNOLOGY
VIDEO

KM.BOND²

FOR 37% THICKER¹, 36% STRONGER¹, HEALTHIER HAIR IN ONE SINGLE APPLICATION.

WHAT IT IS

Our advanced plant protein complex works to strengthen the hair from within. Rich proteins from superfoods are hydrolysed to create smaller molecules that penetrate the hair cortex and cuticle layer to refill damaged hair. New hair bonds are created for advanced repairing benefits that results in 37% thicker¹, 36% stronger¹ healthier hair in one single application. Hair strength continues to build over time with every service.

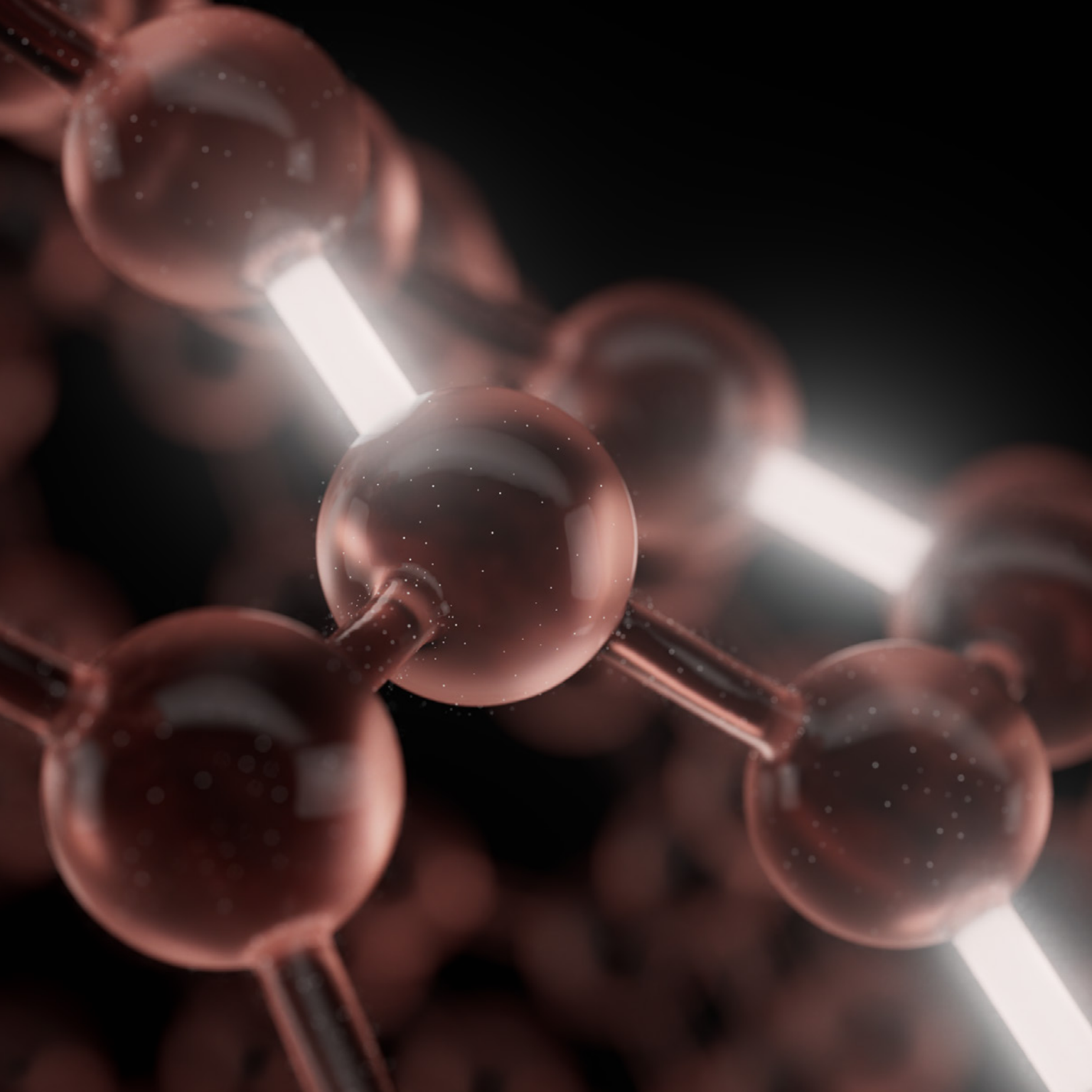
HOW IT IS OBTAINED

Hyper fermentation of superfoods to obtain a high protein content.

RESULTS ON HAIR

Hair looks thicker, stronger and healthier.

¹On pre-lightened hair



THE RANGE

CLEAR

Pigment-free SHADE perfect for adding shine or to pastelise other SHADES. It can also be used as an add-on hair treatment for clients with natural or coloured hair.

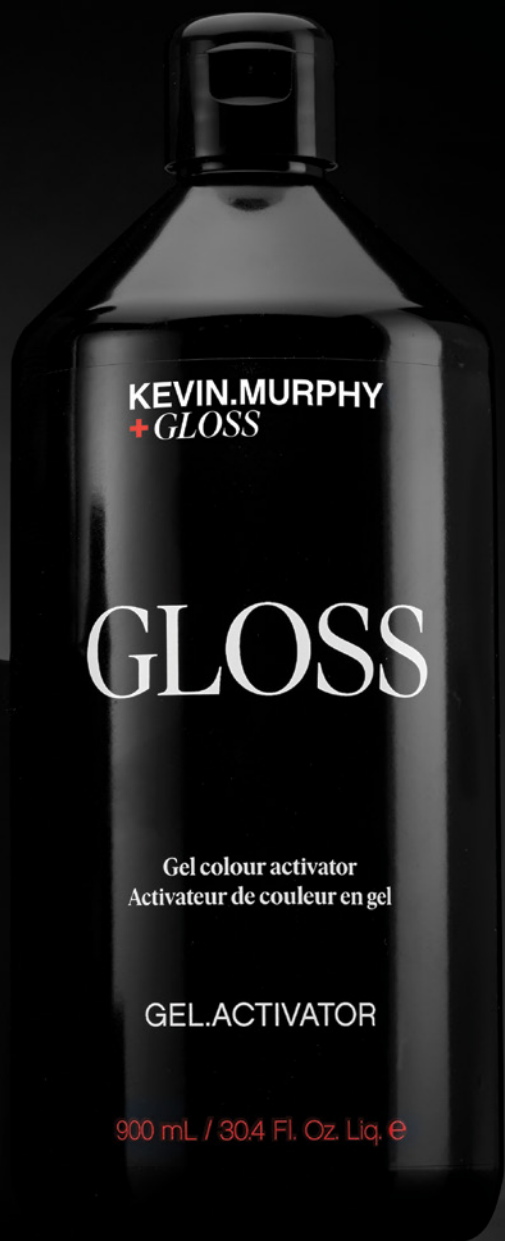


39 LUMINOUS SHADES

GLOSS acidic hair colour treatment is available in a range of sheer, soft SHADES for endless creativity and natural looking results.

NATURAL
WARM
COOL





KEVIN.MURPHY
+ GLOSS

GLOSS

Gel colour activator
Activateur de couleur en gel

GEL.ACTIVATOR

900 mL / 30.4 Fl. Oz. Liq. e

GEL.ACTIVATOR

The GEL.ACTIVATOR features an innovative, luxurious liquid gel texture for easy and quick mixing. Its acidic pH protects the health and integrity of the hair.



KEVIN.MURPHY ACTIVATORS

Discover a range of premium, versatile activators integrated with the entire KEVIN.MURPHY colour line (excluding GLOSS), elevating your in-salon experience.

WHY YOU'LL LOVE THEM

- **VEGAN FORMULAS:** ideal for creating 100% Vegan Colour services when combined with CODE SHADES and BLONDE HIGH.LIFTS.
- **ENRICHED WITH YUZU EXTRACT:** a luxurious skincare ingredient that helps nurture hair throughout the colouring process.
- **UNRIVALED SILKY FINISH:** for a smooth and easy application.
- **TEXTURE VERSATILITY:** two options catering to every colourist's application preference.

THE RANGE

CREAM.ACTIVATOR

3.5 VOL. 1%
10 VOL. 3%
20 VOL. 6%
30 VOL. 9%
40 VOL. 12%

LIQUID.ACTIVATOR

3.5 VOL. 1%
10 VOL. 3%

COLOUR TOOLS

COLOUR.BOWL

The COLOUR.BOWL is an everyday essential. Its sleek, stylish and highly durable finish makes it a salon must-have for all colourists. Most colour bowls only hold up to 180g, leading to repeated colour mixing, but COLOUR.BOWL holds up to 250g of colour, providing enough room for a global application of long, thick hair, from new growth through to the ends.

SUGARCANE.BOWL-LINER

Style meets sustainability with the SUGARCANE.BOWL-LINER. This convenient and cost-effective insert, made from 100% reusable sugar cane fibre, is designed to fit inside your COLOUR.BOWL, reducing the need for rinsing between colour applications and saving precious time between clients while significantly reducing water usage in the salon. Completely compostable within 30 days.

COLOUR.WHISK

The COLOUR.WHISK features a sleek, innovative design for precise colour mixing with minimal colour waste and optimal functionality.

COLOUR TAIL.COMB

Constructed of durable carbon and featuring a straight, long, thin tail, the COLOUR TAIL.COMB is a must-have for precise, perfect colour at every appointment.

APPLICATOR.BOTTLE & MIXING.SPHERE

Custom designed APPLICATOR.BOTTLE allows for easy, ergonomic application from all angles while MIXING.SPHERE ensures a smooth, even consistency and facilitates cleaning.

COLOUR.SCALE

COLOUR.SCALE is ideal for measuring any colour formulation. Compact, precise and battery operated with a 180 second shut-off time.

COLOUR.CAPE

Provide your clients with premium protection and maximum comfort with the COLOUR.CAPE. An everyday colour essential, our lightweight cape has been designed to offer protection and comfort, and is made from soft, colour-resistant material.

COLOUR.APRON

Designed with colourists in mind, the COLOUR.APRON is as fashionable as it is functional. Our stylish apron provides premium protection, and has the added benefit of a super-convenient storage pocket. It's also made from high-quality materials that make it a true reflection of the KEVIN.MURPHY fashion aesthetic.

COLOUR.RACK

Organise and display your COLOR.ME by KEVIN.MURPHY and KEVIN.MURPHY+CODE tubes effortlessly with the sleek COLOUR.RACK. Designed with modular, interlocking sets, it adapts any space and ensures a quick, clear view of each shade number for easy and precise selection.

GLOSS.RACK

Keep your KEVIN.MURPHY+GLOSS bottles perfectly organised with the modular, interlocking GLOSS.RACK. Featuring an innovative pusher system, it ensures easy access and precise positioning of each bottle for a streamlined workflow. Maximise functionality and sale in your backbar with this must-have solution.

SWATCH BOOKS

The KEVIN.MURPHY+CODE, COLOR.ME by KEVIN.MURPHY and KEVIN.MURPHY+GLOSS portfolios are at your fingertips! Explore the exclusive swatch books containing each range's hair swatches and usage guides.

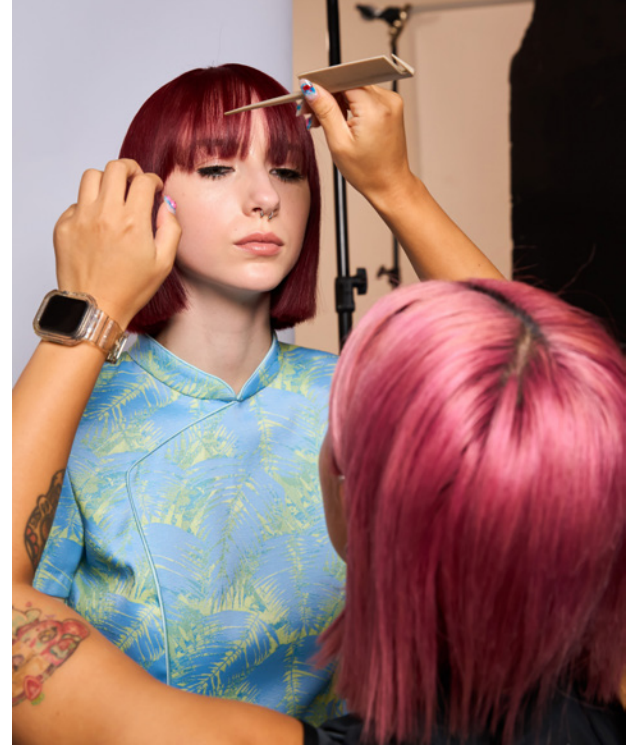
COLOUR.WHEEL

Using every last drop of colour just got easier with the COLOUR.WHEEL! This sleek, innovative tool, modelled after a skateboard wheel, is designed specifically for COLOR.ME by KEVIN.MURPHY tubes. Place the end of the tube in the slot and roll the wheel over the tube. This will push the colour towards the bottom, ensuring that you get the most out of each shade.



SUPPORT

KEVIN.MURPHY creates a positive impact on both your business and the client experience. We believe that understanding the diversity of each salon, stylist, and business is the key to meaningful collaboration. This, coupled with tailored support, education and development opportunities, will strengthen and enhance your brand to ensure a bright future together.



EDUCATION

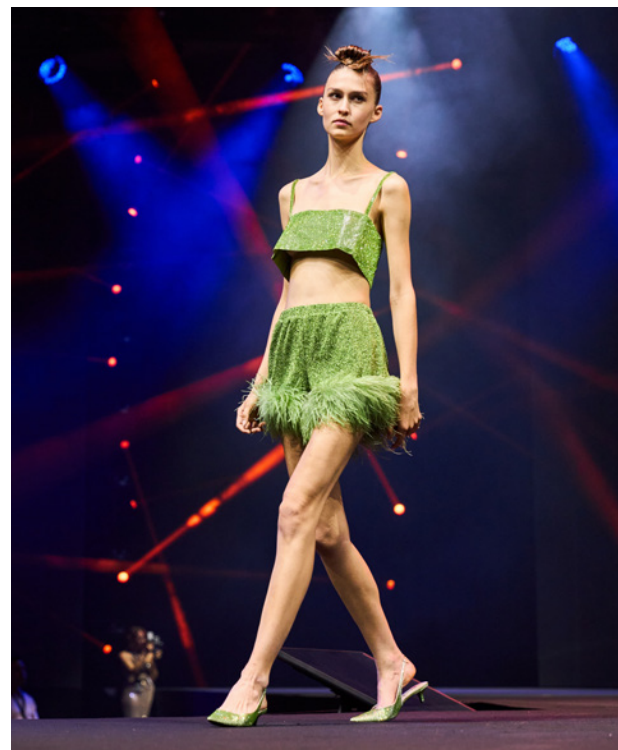
KEVIN.MURPHY education draws inspiration from the runway and editorial world, offering classes and programs designed to enhance the skill sets of all participants. We understand that colour plays a crucial role in salon revenue, and our goal is to empower salons and stylists to reach and expand their potential by providing colour techniques and services that enhance productivity.

FOLLOW
KEVIN.MURPHY
EDUCATION
ON INSTAGRAM



THE COLOUR JOURNEY

In order to bring our brand to life inside the salon, we've created inspiring visual tools that build loyalty and appeal, whilst generating a positive impact on both your business and the client experience.



FASHION CONNECTION, INSPIRATION & COMMUNITY

In the ever-changing landscape of fashion trends, we recognise the evolving demands of salon clients. Our goal is to keep you seamlessly connected to the latest fashion trends so that you have all relevant information available at your fingertips. Our online channels are available 24/7, offering inspiration from pro tips, hair transformations, classes and opportunities to connect with our community.

KEVIN.MURPHY EDUCATION

COLOR THEORY

- **START** - This essential class offers an overview of COLOR.ME by KEVIN.MURPHY. Topics include colour philosophy, hair diagnosis, client communication, product usage and point of difference.
- **PRE.CODE** - Salon owners, decision makers, and lead colourists to understand the benefits of partnering with CODE for teams and clients.

HANDS.ON

- **BLONDE.TECHNIQUES** - An advanced and dedicated session that explores everything from undertone to application. Includes hair diagnosis, client consultation, advanced lightening colouration and removal of artificial colour.
- **GREY COVERAGE** - Explore different coverage and technology options ranging from multi-tonal to opaque and fashion results. Topics include resistant hair, lightening with grey, managing unwanted warmth, colour balancing and troubleshooting.
- **GLOSS** - Driven by performance, KEVIN.MURPHY+COLOR.ME GLOSS is uniquely designed as a colour and treatment in one. Understand how to incorporate KEVIN.MURPHY+COLOR.ME GLOSS into the COLOR.ME portfolio as multifaceted products that work in synergy.

Please contact your sales consultant to book our educator.



VISIT KEVIN.MURPHY
EDUCATION PRO PAGE





CONNECT WITH THE COMMUNITY

We want to be by your side 24/7 and keep you connected to the KEVIN.MURPHY experience.

You can join any of our social media channels to get connected with the most recent KEVIN.MURPHY news; from sneak peeks and exclusive behind-the-scenes images to product tips, latest fashion trends, prestigious awards and media features.

CLICK AND CONNECT

Our digital learning platform to nourish your journey with fun things to explore. A place to login, learn and interact with the KEVIN.MURPHY Brand.



JOIN OUR SOCIAL MEDIA CHANNELS

Scan the QR code to find all our social media channels.







KEVINMURPHYSA.CO.ZA

SKINCARE FOR YOUR HAIR

